

WOOL MARKET REPORT

Unchanged market on most micron groups in ZAR terms, with slight positive movement in Dollar terms.

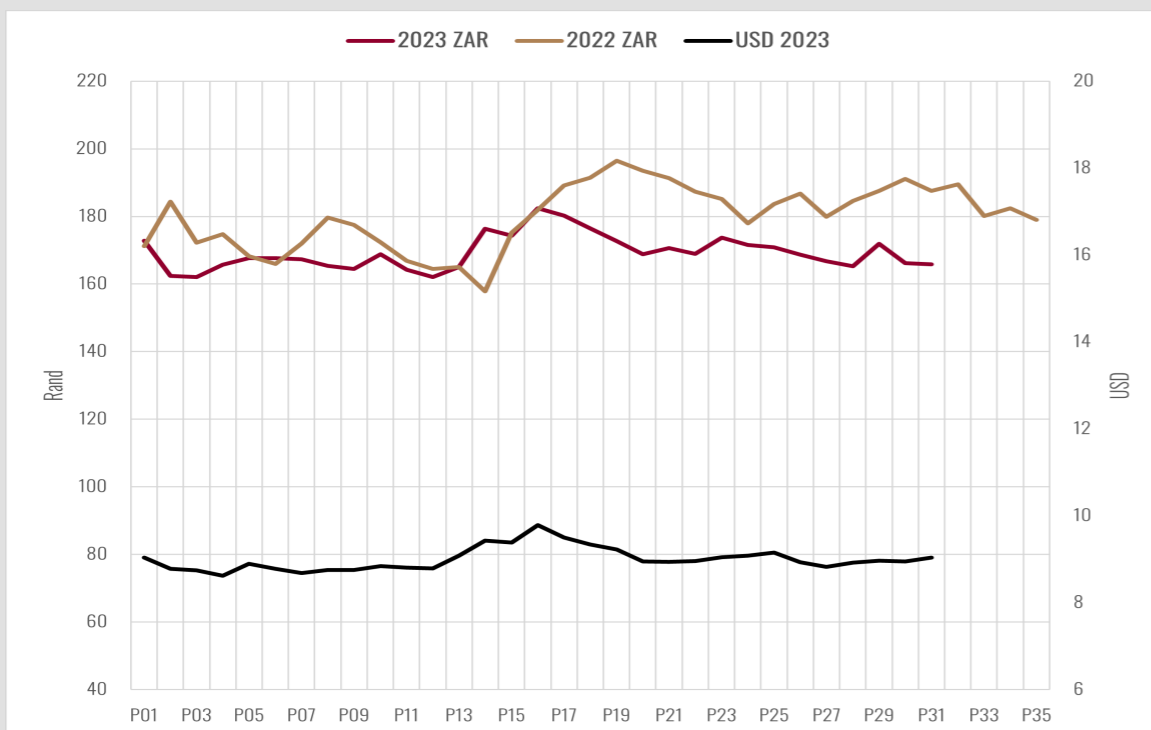
The following auction is scheduled for 22 May 2024

 6815 BLS
  R18.35 +1.2%
  R 12.15 +0.2%
  R19.83 +0.49%

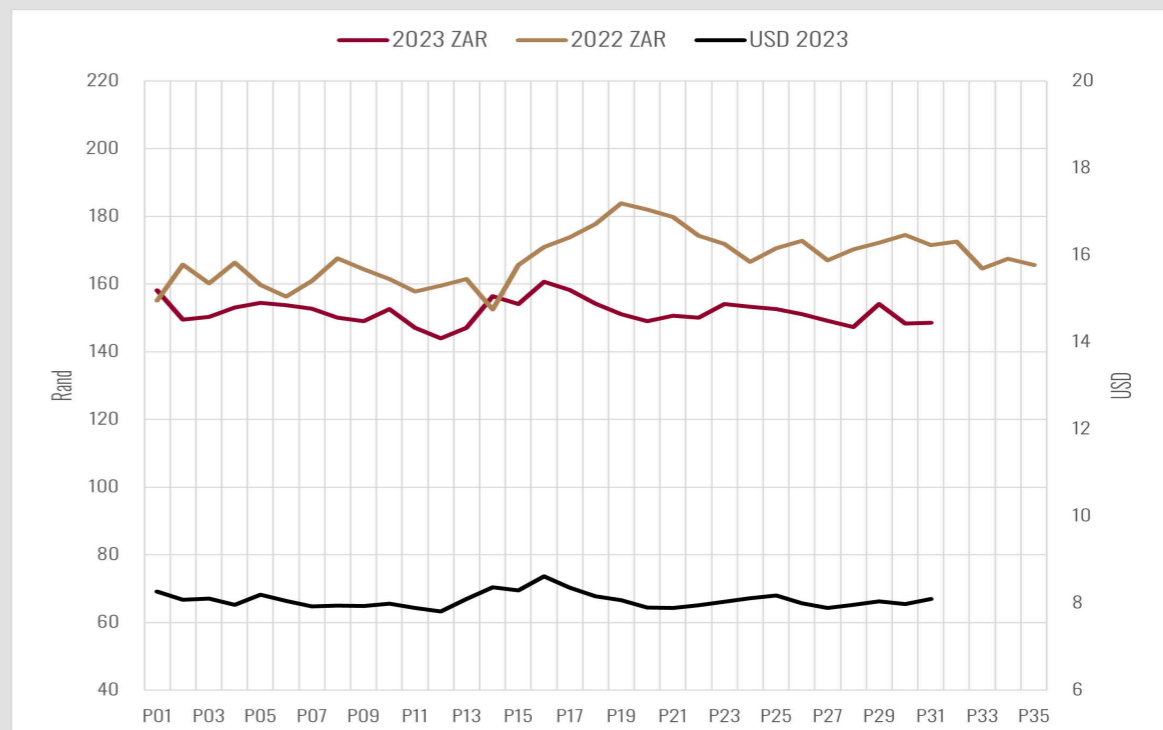
- ▲	17μ	18μ	18.5μ	19μ	19.5μ	20μ	20.5μ	21μ	22μ
1. AUS ZAR	205.00 +0.5%	183.00 0.0%	176.00 +0.6%	170.00 +0.6%	166.00 +0.6%	163.00 +0.6%	161.00 0.0%	159.00 0.0%	158.00 +0.6%
2. SA NON - RWS	205.00 -0.5%	183.00 -0.5%	178.00 0.0%	171.00 0.0%	168.00 0.0%	165.00 0.0%	161.00 0.0%	160.00 0.0%	157.00 0.0%
3. SA RWS CERTIFIED	210.00 -0.9%	190.00 0.0%	184.00 0.0%	177.00 0.0%	171.00 0.0%	169.00 0.0%	164.00 -1.2%	163.00 -0.6%	159.00 -0.6%
4. SA RWS PREMIUMS	+2.4%	+3.8%	+3.4%	+3.5%	+1.8%	+2.4%	+1.9%	+1.9%	+1.3%

SA average market indicator RWS **165.78** **-0.3%**

RWS 2 YEAR TREND



NON-RWS 2 YEAR TREND



BUYERS LIST	CAT ▼	% SHARE	BALES (YTD)
BKB PINNACLE FIBRES	1769	29.35%	43501
MODIANO SA	1050	17.42%	60740
STANDARD WOOL	950	15.76%	48681
STUCKEN & CO	755	12.53%	21745
TIANYU SA	709	11.76%	44605
LEMPRIERE SA	474	7.86%	19154
SEGARD MASUREL SA	210	3.48%	11018
VBC WOOL SA	110	1.83%	2004

TOP 5 PRICES

BKBSA, Port Elizabeth	16.1μ	R165.20	RWS
Narrow Slip Trust, Stutterheim	17.5μ	R162.00	RWS
JD Hancke Brdy Trust, Bethal	16.9μ	R157.50	RWS
NW Emslie, Adelaide	17.1μ	R156.00	RWS
NW Emslie, Adelaide	16.8μ	R155.50	RWS

BROKERS

Catalogue Offering **SOLD YTD**

BKB ▼	OVK	JLW	MAS	QWB	VLB
4152	1970	0	0	641	52
151115	68617	5652	13076	10044	4015

